

Chalet Cochand

where holidays are more fun!



CHEQUES — If paying by personal cheques, please establish credit before arrival.

SLEIGH RIDES

Can be reserved on request (1-hour notice minimum).

CHURCHES

Catholic and Protestant Churches nearby.

CHRISTMAS MIDNIGHT MASS

Sleigh \$1.50
Buffet \$2.00

NEW YEAR'S EVE CELEBRATION

Including Buffet Supper — charge per guest \$5.00
— charge for transients 7.50

GARAGE

Heated Garage Winter Parking: 24 hours \$1.50, week \$7.00

FINA SERVICE

Credit Cards Honoured

GENERAL INFORMATION

BY CAR — from U.S.A. through Montreal, Route 9 (bypass Montreal, Route 9 C) or from Toronto Route 2 to Traffic Circle. Take 11 A onto 11 to Ste. Adele. Turn right for 5 miles to the Chalet.

BY BUS OR TRAIN — Provincial Transport Bus or Canadian Pacific Railway from Montreal to Ste. Marguerite.

BY AIR — Direct Air Service to Montreal via Trans-Canada, Colonial and Northeast Airlines. Limousine service on request to or from Montreal or Dorval Airport \$20.00 per car.

Hotel Is Sprinkler Protected Throughout

REFERENCES



REQUESTED

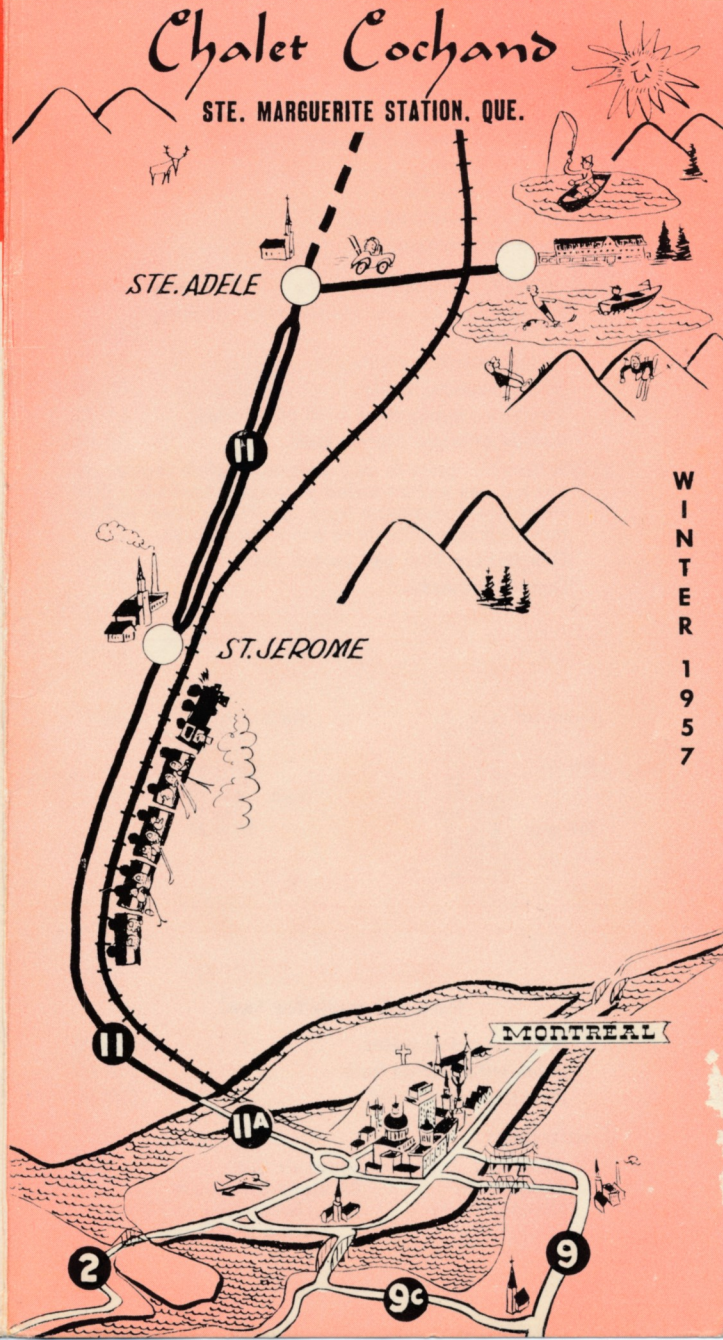
For Reservations Phone:

Chalet Cochand, Ste. Marguerite Station.
Prov. of Quebec Canada, 802 or 84.
Louis Cochand, Owner Mgr.



Chalet Cochand

STE. MARGUERITE STATION, QUE.



W
I
N
T
E
R

1
9
5
7

DAILY AMERICAN PLAN RATES

Per Person, including meals

RUNNING WATER	DAILY
Triple (double and single bed)	\$ 8.50
Double accommodation	\$ 9.25
(twin or double bed)	
Single	\$10.00

TWO ROOMS CONNECTING BATH	
Four persons	\$11.50

PRIVATE BATH	
Triple (double and single bed)	\$11.50
Single (shower)	\$12.00
Double accommodation	\$13.50
(twin or double bed)	

SWISS CHALET ACCOMMODATION	
Occupied by 4 or more persons . . .	\$11.50 to \$13.50

NOTE: Single occupation of double room: double rate less 1/3rd.
Hospital tax 30c. per person daily.

TIPPING SUGGESTION — In the belief that guests on vacation wish to be relieved of direct tipping, a service charge of 15% of the total charge is added to the bill. Unless we are notified otherwise we will assume that guests wish to take advantage of this plan.

Ski Fun in the Sun

COLOR MOVIE FILMS — Available for Club Showing.

SKI SCHOOL RATES

1 class lesson	\$3.00
6 class lessons	\$12.00
1 day lesson (2 classes)	\$5.00
3 consecutive day lessons (6 classes)	\$10.00
Private lessons	\$7.00
Children, 12 and under, half rate	

SKI TOW RATES

T-Bar per day . . .	\$3.00	Afternoon	\$2.00
3 rope tows	\$1.50	Afternoon	\$1.00
Comb. Weekly rate	\$18.00		

SKI AND GIFT SHOP—

Let our Ski Pro advise you. Prices compare with anywhere.

SKI EQUIPMENT RENTAL

Skis	\$1.50 per day	\$ 9.00 per week
Boots	\$1.25 per day	\$ 7.00 per week
Poles50 per day	\$ 3.00 per week
Complete	\$2.75 per day	\$15.00 per week
Skates50 per 1/2 day	

NO! } Driving
 } Walking
 } Waiting
SKI! } Nursery Slopes
 } Expert Slopes
 } T-Bar and Tows
 } RIGHT IN FRONT OF HOTEL

ALL-INCLUSIVE SKI WEEKS

(7 days — 6 nights)

(These special weeks start before lunch day of arrival and end after lunch day of departure)

Includes:

- Room Accommodation
- Daily Class Instruction
- Regular Menu in Main Dining Room
- Unlimited Use of T-Bar Lift and Tows
- Cocktail Party
- Swiss Fondue Party
- Evening Entertainment
- All Hotel Privileges

Ski Week Rates: Per Person

Triple (double and single bed) running water	\$59.95
Double running water	75.95
Single running water	85.00
Two twins connecting bath (4 persons)	85.95
Double or triple private bath	89.95

NOTE: Arrivals prior to and departures after regular ski week dates will be billed at normal American Plan rates. No deductions from Ski Week rates will be made for late arrivals or early departures.

Hospital tax 30c. per person daily.

*Deposit required.

SKI WEEK DATES—DEC. TO APRIL

December	1 to 7	March	2 to 8
"	8 to 14	"	9 to 15
"	15 to 21	"	16 to 22
January	5 to 11	"	23 to 29
"	12 to 18	"	30 to Apr. 5
"	19 to 25	April	6 to 12
"	26 to Feb. 1	"	13 to 19
February	2 to 8	"	20 to 26
"	9 to 15		
"	16 to 22		
"	23 to Mar. 1		

HONEYMOON SPECIAL

(one full week for two)

Room, running water	\$155.00
Room with private bath	185.00
Private Swiss Chalet	195.00

Includes:

- All Meals
- Sleigh Ride
- Cocktail Party
- Souvenir Gift
- All Hotel Privileges
- Free Use of Lifts and Tows During Ski Weeks

**CHALET COCHAND SKI SCHOOL UNDER THE DIRECTION OF
HARVEY CLIFFORD**

**Special Slalom Week Jan. 12th to 18th. \$5.50 additional charge to
special ski week rate.**

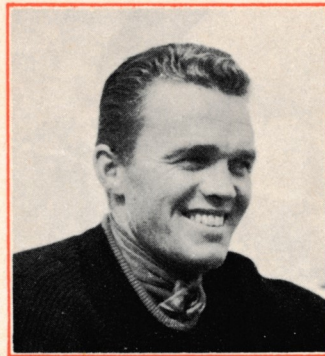
CHALET COCHAND SKI SCHOOL, in its 47th year of winter sports will once again have internationally famous Harvey Clifford as Director of the School.

Harvey is one of Canada's top skiers having competed all over the world including the Olympics, and having captained the all-Canadian Team at the F I S world Championships, Aspen, Colorado. Harvey is also Chief Instructor-Examiner of the Canadian Ski School, and has been directing Ski Schools annually for the past seven years — winter at CHALET COCHAND, summer in NEW ZEALAND, for the New Zealand Government, at Tongariro.

Harvey personally picks his own Instructors from the CANADIAN SKI SCHOOL held yearly in the Laurentians, and has a staff of ten fully qualified instructors constantly in his service. Apart from teaching, the instructors will prove to be a great help in selecting equipment to suit each individual pocket-book from our well-equipped Sports and Ski Shops.

"We never realized that learning to ski could be so easy," said a group of skiers after their stay at CHALET COCHAND. "Your School is quite the best I have ever attended," said many others.

Many of our guests prior to arrival have said they thought they were "much too old", "not athletic enough" to become top-notch skiers, but Harvey states, and we heartily concur with his remarks "When you have taken one week's lessons (controlled skiing) at CHALET COCHAND, you can attack any slope of any degree anywhere. We are here — and we invite you to take this test."



Cordially,

LOUIS COCHAND.